

ANGLEPOISE®



National Trust



Original 1227™
Floor Lamp

Original 1227™

Floor Lamp

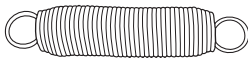
ASSEMBLY PARTS AND TOOLS:

Your Anglepoise® comes supplied with everything you need to assemble and install your product. The assembly parts and tools you'll find in the box are:



2x 100115

Anglepoise®
Spanner



2x 100488

Anglepoise®
Constant
Tension Side
Spring



1x 100217

Allen Key



2x 100033

Grub Screw
(One Spare)



6 x 104825

Pole Cable
Clip
(Three
Spare)

PARTS NOT TO SCALE

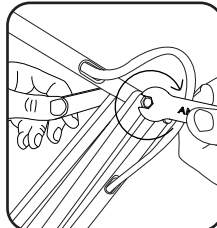
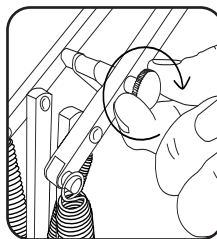
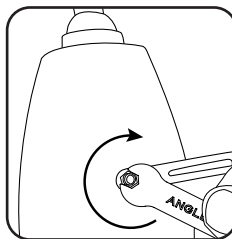
MAINTENANCE & ADJUSTMENT:

Prior to cleaning or maintenance, always switch off and disconnect from the electricity supply and allow the shade to cool. Clean with a soft, dry cloth avoiding using chemical based cleaners.

Once your lamp is assembled, you can use the spanners provided to fine tune the arms and shade.

If the shade becomes loose over time, use the Anglepoise® Spanner provided to tighten the shade nuts. Tighten until the shade is able to hold itself in all positions.

To adjust the lamp, place on a level surface as a sloping surface will upset the balance. If necessary, carefully tighten the nuts until the shade and arms support themselves in any position. To avoid damage caused by excessive force, please take care with the movement range and characteristics of your product.



TECHNICAL INFORMATION:

Your Anglepoise® comes supplied with a compatible E27 LED bulb with a colour temperature of 2700K. This is the bulb we recommend for most applications.

If you require a different light output you can use an alternative bulb but, if the bulb is of a greater weight, balance may be affected.

Recommended Bulb Weight: 25g-60g. Recommended Colour Temperature: 2700K.

Important: Do not use a bulb which exceeds the maximum wattage indicated inside the shade.

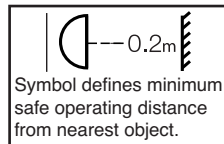
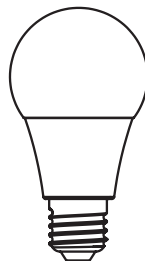
Rated Voltage: 220-240V AC / 50-60Hz

Please Note:

This product should **ONLY** be used in a dry, indoor environment.

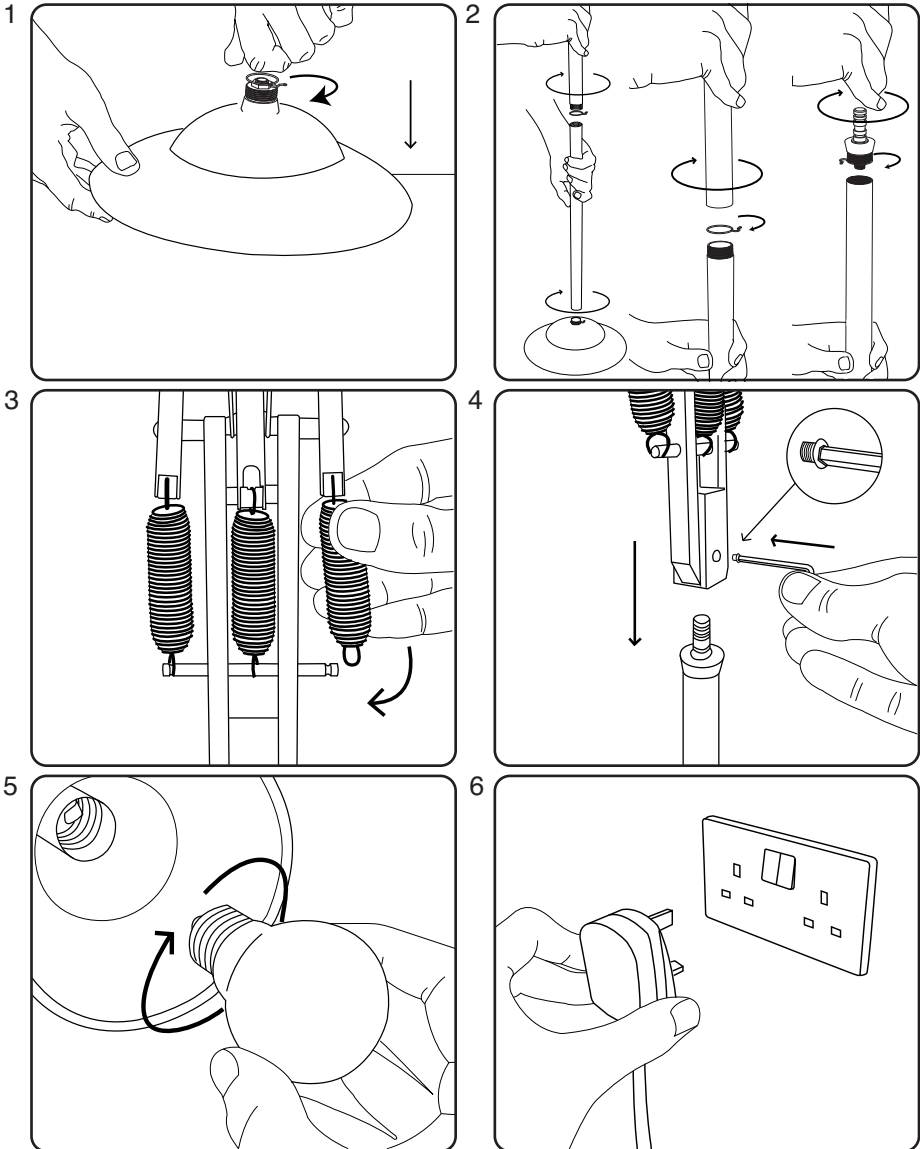


220-240V AC ~ 50-60Hz



Repairs and the replacement of damaged cables or electrical parts should only be carried out by a qualified electrician, an authorised distributor or by Anglepoise® Ltd.

INSTALLATION:



1. Remove base from the packaging and place onto an even surface.
2. Screw the two pole sections together and fit pole clips. Then screw onto the base.
3. Attach the two outer springs to the lamp.
4. Take the lamp and place it onto the floor pole. Screw in the locating grub screw using the Allen key provided.
5. Screw in the bulb.
6. Plug the product in and turn it on using the inline switch.

Anglepoise and the National Trust have come together to create a timeless range of lamps that are designed to illuminate our homes and the everyday objects that bring us joy.

The funds we raise will shine a light on conservation work across some of the Trust's hidden gems including The Homewood, a modernist villa in Surrey, our source of inspiration for the first Anglepoise and National Trust collaboration.

Anglepoise will contribute in the first year of the collaboration a minimum of £15,000 to the National Trust. The funds raised will help support The Homewood, designed by architect Patrick Gwynne and gifted to the National Trust in 1999.

GUARANTEED FOR LIFE - WARRANTY REGISTRATION:

Anglepoise are pleased to offer a **Lifetime Warranty** on all products used domestically upon **registration**.

Products can be registered at:

www.anglepoise.com/manifesto/lifetime-guarantee/warranty-registration

For full details then please see:

www.anglepoise.com/legal/guaranteed_for_life



CONTACT

Anglepoise®

A10 Railway Triangle
Walton Road
Farlington
Hampshire, PO6 1TN
United Kingdom

UK & International Enquiries

+44 (0) 1227 538 038
hello@anglepoise.com

SOCIAL MEDIA & NEWSLETTER

Sign up to the Anglepoise® newsletter for the latest news and updates at:

www.anglepoise.com/newsletter

We can also be found on most social media channels - just search using **@anglepoise**



@anglepoise

V3

ANGLEPOISE®
Abandon Darkness.